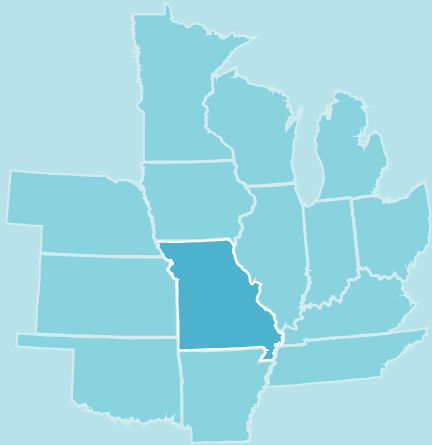


Missouri deserves the best. We're not there yet, but we will be.



Missouri's economy is growing, but we lag our peers in every measure.

Among our 14 peers, Missouri ranks:

#14

for GDP growth

#8

for wage growth

#9

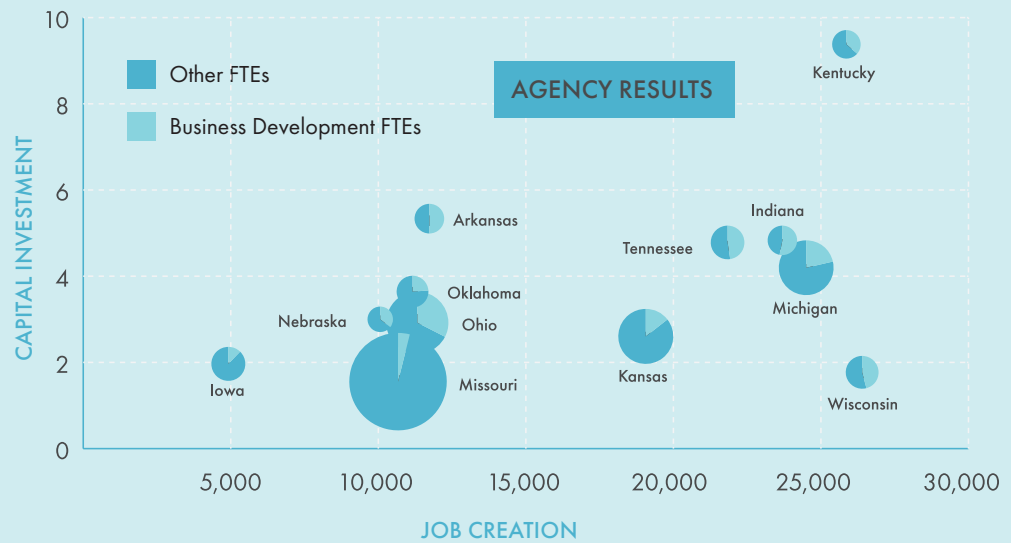
for job growth

#11

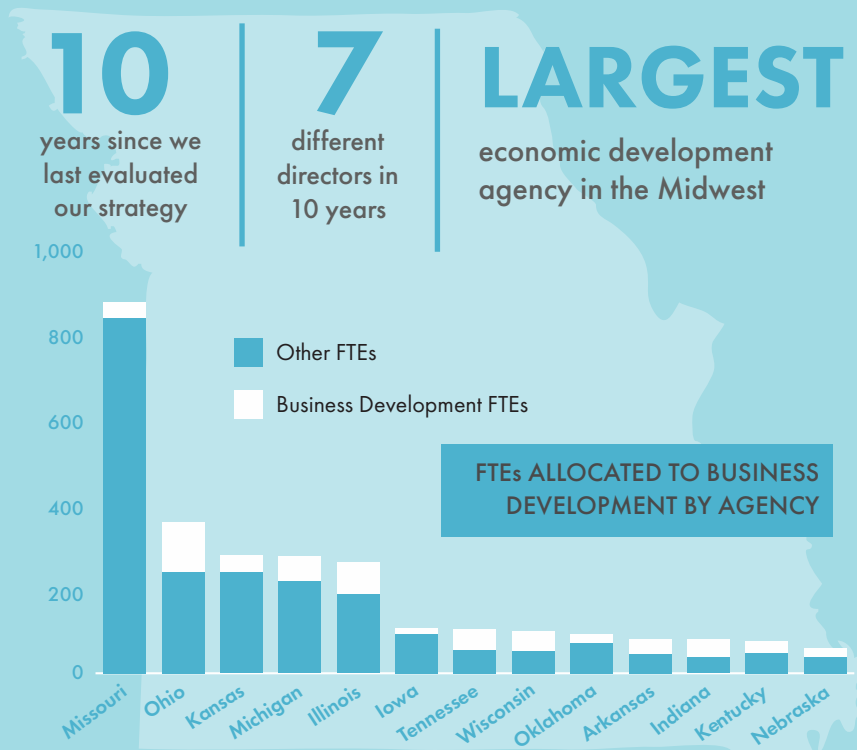
for agency job creation results

A focus on business development matters.

Winning states tend to have small economic development organizations and are more focused on business development.



Our lack of strategy and focus leads to these results.



Transforming the Department of Economic Development

The new DED will be laser focused, regionally targeted, customer centric, and data driven.

Advantages

- Built using input from more than 3,000 Missourians
- Uses existing resources more efficiently
- Allows DED to tailor our approach to the unique needs of each region
- Expands our presence and responsiveness, allowing us to build stronger relationships locally
- Structures DED around the customer rather than around programs and processes
- Prioritizes the most important factor in economic development—the need for skilled workers
- Ensures that planning and performance are baked into the organization, making DED agile and more responsive to emerging trends



New Divisions

Regional Engagement Division

Provide businesses and communities with one primary point of contact for the state

Business and Community Solutions Division

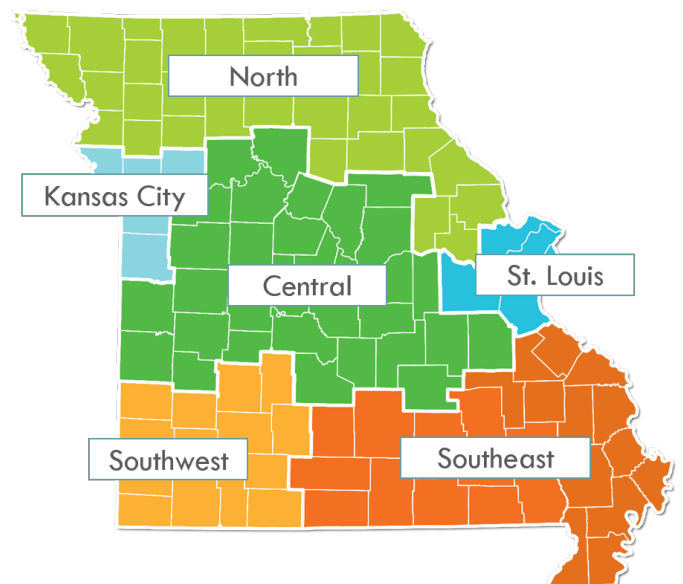
Solve customer challenges with a combination of subject matter expertise, program administration, and innovative problem solving

Missouri One Start Division

Win jobs for Missouri by delivering tailored pre-employment screening, employment marketing, and job-specific training to make businesses more competitive

Strategy and Performance Division

Provide data and analysis, strategic planning and performance management support to the other divisions and programs within DED



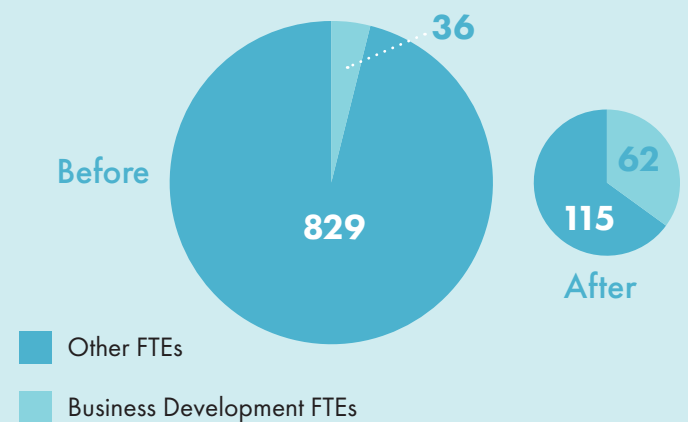
Building a laser focused economic development agency

To achieve the results that we see in top states, we need to take a hard look at the organization's mission and find ways to better align some of our functions with other areas of state government.

Advantages

- Uses best practices from top performing states with laser focused business development agencies
- Better aligns related policy areas of state government that are currently separate, especially within workforce development
- Consolidates certain functions within agencies better equipped to handle them

The new DED will be laser focused on business development.



Shifting Divisions

